

COMPANY PROFILE



SOFTTEL TECHNOBASE SOLUTIONS PVT LTD



+919834663366



www.softtel.in



info@softtel.in

PROFILE

We are strategists, creatives, producers and technologists who are passionate to create progressive branding and digital marketing ideas. For your business or brand, we bring solutions, not services to life to polish the bottom line.

- Softtel Technobase Solutions Private Limited.
- Work since 2013 as name Softtel Technology.
- Registered under Indian Companies Act 1956 since 2019.
- Registered with MSME (Micro, Small & Medium Enterprises).
- Registered partner of NSIC (National Industries Corporation Limited) for taking central Government software project.
- Softtel Technobase Solutions Private Limited. is a Software Development and IT Consulting company with more than 8 years of experience in the market.
- Softtel Technobase Solutions Private Limited. provide IT solutions, underlined by innovation and value creation that impact and the businesses processes.
- Softtel Technobase Solutions Private Limited. takes pride in its philosophy of 'Customers First' which empowers our Employees to create a real value for the customers.
- Our continuous development and training programs ensure that we are always positioned to provide our valued customers a wide range of high quality services, using the latest tools and technology.
- We are focused on complete reliability models of project execution and management. We offer turnaround guarantees for any project we undertake, backed by comprehensive management planning and supervision.
- The company has under its fold, over 9 highly skilled and experienced professionals from system analysts, system designers, programmers, system integrators, Engineers, MBA's and MCA's to Marketing professionals, with domain expertise in their own fields of specialisation.



QUALITY POLICY

Softtel Technobase Solutions Private Limited. is committed to providing products and services of the highest possible standards to satisfy our customer expectations of quality, reliability and service. With total customer satisfaction as our quality policy objective, we have well defined and documented quality standards. Procedures have been laid down for project management, the entire Software Development Life Cycle, monitoring customer relationships, and human resources management. For each phase of the Software Development Life Cycle, there are processes for inspection & reviews, documentation, configuration management and change management.

Softtel Technobase Solutions Private Limited. recognizes that the diligent operation of a Quality Management System leads to efficient and effective performance of work activities with minimum errors.

OUR MISSION

Our mission is your success, We not need a customer we need customer satisfaction, and our clients in order to provide effective, efficient and collaborative solutions for success.!

OUR VISSION

In the coming years, every company and business will be provided by the best digital solutions and most advanced technology through our combined skills and experience. Thus, there will be more business opportunities to be created with the help of our services.!

OUR VALUES

SOFTTEL respects and seeks to maintain the highest standards of fairness, equality, integrity, and honesty. Our corporate philosophy is:

- Total customer satisfaction, continuous improvement and total involvement.
- Constantly and consistently deliver products and services of highest quality.
- Keep pace with change and continuously strive for innovation while keeping in step with modern technology and methodology. Our core value centers on total customer satisfaction and quest towards ensuring good corporate citizenship.



COMPANY INFRASTRUCTURE

We are professionally managed Software Development Company servicing clients all over the India & abroad.

Softtel Technobase Solutions Private Limited. was formed with a clear goal to provide quality software development services.

We are equipped with state of the art infrastructure to cater to nearly every software development requirement :

- Modern office set-up with state of the art development centre
- High speed connectivity to internet gateway
- Latest hardware and licensed software
- Custom built testing software applications
- Adequate communications infrastructure
- Reserve employee resource pool
- Data backup systems and redundant backup servers
- Redundant Power backups through Generators and Inverters
- Secure access for all employees.



IT SERVICES

SOFTTEL delivers quality and timely solutions and services at a price that make our clients smile. Jupsoft focuses on offshore development at our excellence centre in Noida, India. This allows us to scale up rapidly (leveraging on the plentiful supply of talent and thus cutting down on execution time) at costs that are on an average 70% cheaper.

An in-depth knowledge of various technology areas enables us to provide end-to-end solutions and services. With our 'Web of Participation', we maximize the benefits of our depth, diversity and delivery capability, ensuring adaptability to client needs, and thus bringing out the most innovative solutions in every business and technology domain.

SOFTTEL is your one stop partner where you can outsource all your support services with complete peace of mind about quality and reliability. SOFTTEL Software Solution's strength lies in understanding the client's business processes, culture, vision and goals across the industry segments and offering client oriented solutions which are highly reliable, creating customer comfort.

Our team is committed to provide IT Services with :

QUALITY | TECHNOLOGY | INNOVATION

Our Services Include:

- **IT Services**
- **Project Management**
- **Consultancy**
- **Outsourcing**
- **Education / Training**
- **Branding Solutions**



SERVICES /

IT SERVICES

IT has high potential in terms of employment and revenue generation. The IT manufacturing sector is growing at an average rate of 28-30% annually over the past decade. Software industry continues to contribute a major portion of Indian IT industry's revenues.

With the dedicated and adroit employees at SOFTTEL, it has been adept in assisting the growth of the nation in the field of Information Technology. SOFTTEL with its vision of quality and innovation has been successful in catering the needs of those who seek our assistance in following areas of IT enabled services:

- **Software Solutions**
- **Web Solutions**
- **App Solutions**
- **Graphic & Multimedia Solutions**
- **Networking Solutions**
- **Quality Assurance & Testing**
- **Application Maintenance & Support**
- **Turnkey Solutions**
- **Offshore Development**



SERVICES / IT SERVICES /

SOFTWARE SOLUTIONS

SOFTTEL Software Solutions has developed a number of products and MIS applications for its clients in this service. Our mature software development processes, combined with excellent infrastructure have significantly increased the “on-time and on-budget” delivery of software in the offshore mode.

We use a highly effective IMPACT Methodology for offshore and distributed software development. Our services begin from analysis, moving through designing, development, testing and implementation to maintenance. Our applications come in all sizes, be it a one-table database, or a massive client-server application. The creation of complete database applications is yet another field that we specialize in.

WE OFFER :

1. Application Development

- Interactive Application Development
- Custom Application Development/ Maintenance
- MIS and ERP Solutions & Support

2. Re-engineering

SERVICES / IT SERVICES / SOFTWARE SOLUTIONS /

1. APPLICATION DEVELOPMENT

Interactive Application Development

Interactive Application Development (iAD) is about harmonizing art with technology. This business division of Jupsoft Software Solution complements the client's requirement of online and desktop applications - be it a workgroup solution or mailing platform. It adds a further arc to the circle of 'Net Totality'

A strong team of software professionals empowers the application development capability at iAD, SOFTTEL Software Solutions. The applications developed range from Web-stores, online service retailing to enterprise information systems. Our competencies in .Net technologies, Java, Python, ASP, XML, PHP and C/C++ are demonstrated in various network-based applications. SQL/ Oracle database engines support most of these applications..

Custom Application Development / Maintenance

It is a well known fact that some of the ready-made, packaged applications have failed to meet the requirements of the customers because of their unique needs and differing business practices and processes. In addition, prohibitive cost of implementing a packaged application and the maintenance thereafter becomes an unwelcome perspective.

We have experienced I.T. Consultants for Project analysis, formulation and concept planning, right up to project management and installation. We develop customized Software that is completely based on user's requirement with GUI (graphical user-friendly interface) on any of the mentioned platform / languages.



SERVICES / IT SERVICES / SOFTWARE SOLUTIONS /

1. APPLICATION DEVELOPMENT

- MIS and ERP Solutions & Support

We offer customized low cost solutions to industries based on open standards, contemporary technologies and maintenance support. While incorporating the best of business practices, we do take special care of the customer requirements.

ERP Solutions include the development of software in a distributed model, with some phases of the project being conducted onsite and others being conducted offshore. Each phase is uniquely defined and executed. After unit, and system testing the product is then sent to the client for acceptance testing. We have satisfied customers find



SERVICES / IT SERVICES / SOFTWARE SOLUTIONS /

2. REENGINEERING

Reengineering Business Reengineering is on the agenda of many companies in different industries. Striving to improve business processes to better meet customer requirements, Business Reengineering initiatives aim at revolutionizing key performance criteria, such as cost, delivery, and quality. As this is a top management issue we ensure that the structure, the work-place contents, the information technology in use and the culture of the organization will successfully assimilate the improved processes.

To tackle with hard and soft barriers and make the reengineering process a success we make sure that following steps are taken in each project:

- √ Diagnosing resistance to change
- √ Managing individual change
- √ Coaching tools and techniques for helping employees navigate the change process
- √ Implement work teams and case managers extensively throughout the organization.
- √ We believe creative thinking cannot be replaced with software tools and stay away from oversophistication
- √ Build learning, renewal, and short feedback loops into business processes.



SERVICES / IT SERVICES / WEB SOLUTIONS /

WEB SOLUTIONS

SOFTTEL provides web solutions & services to help customer reach to a wider customer base. The web is a new and different medium for communication and requires a different viewpoint and skill set to use it in the most effective way. You need web consulting to get more return on your investment in your web site. We can help you get the most effective solution through:

- Website Development
- Web Multimedia
- Web Promotion
- Search Engine Optimization
- Intranet Development
- Web hosting
- E-commerce



SERVICES / IT SERVICES / WEB SOLUTIONS /

WEB SOLUTIONS

- Website Development

Websites can enhance awareness of your brand, leading to more sales. Build relationships with customers, vendors, and shareholders through your online identity get more traffic from the search engines. Get more traffic from the search engines, fast loading web pages with excellent navigation and designing, communicate more effectively. Either you are looking for Dynamic site or a static site is your solution we can help you acquire both. We offer web sites on flash, asp, php which are tailor made to target your customers and make your presence live on web.

- Web Multimedia

Add video on your web site or have a complete flash web site and see your popularity ranking high.

- Web Promotion

We can promote your site to acquire more traffic, more enquiries, more leads, and more value. Web Promotion is a three phase process and we are your companion to see you through all the phases and that too very well. We get your site listed at the most popular Internet directories because they can send you substantial amounts of traffic and affect your ranking in various search engines. Email marketing is a great way to promote your electronic Shop to buyers including those who are interested in your shop but have not purchased items from you in the past.



SERVICES / IT SERVICES / WEB SOLUTIONS /

WEB SOLUTIONS

- Search Engine Optimization

Your website doesn't mean anything to anyone unless it can be found by your customers. Phase two in Web Promotion is optimizing your site so it appears high in the search engines and uses them to bring even more people to your pages. Our Web development and Promotion methodology, caters to the best of breed processes which helps in a successful on-time and above expected delivery. Phase three ensures that your site attracts even more traffic for which our experts go over techniques like reciprocal links, email signatures, newsletter articles and more.

- Web Hosting

We provide service to host your own website, and users with online systems for storing information, images, video, or other content accessible via the World Wide Web. We offer 100 MB, 500 MB, 1 GB and Unlimited web hosting. We also offer custom web hosting as per your requirements. File Hosting Service: Host your static content, typically large files that are not web pages.

- E-commerce

We offer e-commerce services in custom-built solutions as well as packaged software customizations and implementations. This helps customers to heave their business from point of sale implementation and go global. Our competent management team, good post-sales services, well-organized business structure, network infrastructure and a secured, well-designed website will ensure ripe results on your investment.



SERVICES / IT SERVICES / G & MSOLUTIONS /

GRAPHIC & MULTIMEDIA SOLUTIONS

Each Client is different with his own ideology and vision, so should be his designs. Having done more than 800+ design solutions, we lend our services for :-
Logos, Brochures, Advertisements, Corporate Profile Presentation, Product Catalogue, Training/ Tutorials Presentation, 2D-3D Animation and Walkthrough.

Softtel As a Creative Logo Design Company in India, we clearly understand the intricacies involved in creating a brand image as we have branded more than 300 companies in our span of 10 years.

Branding aims to establish a significant and differentiated presence in the market that attracts and retains loyal customers. Bringing your dream to live is a very tough job but you still achieved in bringing your business dream live & competitive but to sustain that image of business to be in the market branding is very important.

Softtel, As on Brochure Design Company in India, we design beautiful brochure designs with a clean and engaging presentation of both text and images speaking for the company.

Our infographic design team, collaborating with our client marketing team, works with our clients to first understand their goals, and then reverse engineers things backwards from there, ensuring the best strategies are in place, the best infographics & other visual content to accomplish the goals, and then assist on the marketing implementation front to help the goals get accomplished.



SERVICES / IT SERVICES / NETWORKING SOLUTIONS /

NETWORKING SOLUTIONS

SOFTTEL Software Solutions can network your computers together by peer-to-peer or using a serverbased network and connect you to the Internet. We will help you secure a domain name, locate an Internet service provider, and configure your network for T1-T3, Dialup, DSL, Cable or connection sharing. We can establish remote access setups, which will help an employee, stay in touch with the workplace, irrespective of the geographical location.

We offer following networking services:

- Preparation of Network Architecture (Network protocol, Backbone at twisted wire, cable or optical fiber, Net topology, Hub/Switches, Conceptual Diagram etc).
- LAN/ WAN set-up.
- Corporate Intranets
- Network Administration.
- Windows NT/ Novell Netware/ UNIX/ Linux Server support.
- IIS Support and ORACLE/ SQL Server administration.

✓ Preparation of Network Architecture (Network protocol, Backbone at twisted wire, cable or optical fiber, Net topology, Hub/Switches, Conceptual Diagram etc).

✓ LAN/ WAN set-up.

✓ Corporate Intranets

✓ Network Administration.

✓ Windows NT/ Novell Netware/ UNIX/ Linux Server support.

✓ IIS Support and ORACLE/ SQL Server administration.



SERVICES / IT SERVICES / QUALITY A & T /

QUALITY ASSURANCE & TESTING

All the software solutions developed undergo following cycle of testing:

Requirements Analysis:

Testing begins in the requirements phase of the software development life cycle.



Design Analysis:

During the design phase, testers work with developers in determining what aspects of a design are testable and under what parameter those tests work.



Test Planning:

Test Strategy, Test Plan(s), and Test Bed creation.



Test Development:

Test Procedures, Test Scenarios, and Test Cases & Test Scripts to use in testing software.



Test Execution:

Testers execute the software based on the plans and tests and report any errors found to the development team.



Test Reporting:

Once testing is completed, testers generate metrics and make final reports on their test effort and whether or not the software tested is ready for release.



Retesting the Defects:

SERVICES / IT SERVICES / QUALITY A & T /

QUALITY ASSURANCE & TESTING

In this cycle applications are passed through following levels of testing:

- √ Component testing tests the minimal software item that can be tested.
- √ Component integration testing exposes defects in the interfaces and interaction between integrated components.
- √ System testing tests an integrated system to verify that it meets its requirements.
- √ Acceptance testing allows the end-user or customer to decide whether or not to accept the product.
- √ After modifying software, either for a change in functionality or to fix defects, a regression test re-runs previously passed tests on the modified software to ensure that the modifications haven't unintentionally caused a regression of previous functionality.



SERVICES / IT SERVICES / APPLICATION M & S /

APPLICATION MAINTENANCE & SUPPORT

We have years of experience in executing maintenance projects. Our team of experienced consultants has been successfully managing maintenance projects of local clients as well as offshore ones.

The quality of product deployment, training and support has everything to do with customer success and satisfaction. We offer annual maintenance plans which are tailor-made as per the client's requirement. If required we depute technical team which works at the client site for the system execution or support as per requirement.

Our clientele includes Government organizations as well. We ensure maximum return on investment to the customer as we provide complete offsite telephone support in the form of consultations, assistance and advice on the use and maintenance of the Licensed Software. Our experts' providing technical assistance and advice for problem diagnosis and resolution, have gained us admirer world over.

We also offer on-site service calls to Customer's facility. In such cases, our consulting charges are subject to service hour charge, plus reasonable travel and out-of-pocket expenses.

SERVICES / IT SERVICES / TURNKEY SOLUTIONS /

TURNKEY SOLUTIONS

SOFTTEL Software Solutions takes up projects under this service for a fixed price and takes all responsibility of execution and project management. These solutions are ideally suited for projects that are fairly well specified and require well-defined interfacing with the client. We have developed a number of products and MIS applications for its clients in this service.

SOFTTEL Software Solution's mature software development processes, combined with excellent infrastructure have significantly increased the "on-time and onbudget" delivery of software in the offshore mode. We use a highly effective IMPACT Methodology for offshore and distributed software development.



SERVICES / IT SERVICES / OFFSHORE DEVELOPMENT /

OFFSHORE DEVELOPMENT

To get the best IT solutions, you don't need to be geographically near us. That's because we offer quality offshore development center. Our **offshore software** solutions in application development and web site development guarantee cost savings without the need to compromise on either speed or quality.

Our 100% customer retention rates speaks for our quality, swift response and cost effectiveness that has fetched us a large number of clients from all parts of the world. These all feathers to our work make us a preferred offshore development house.



SERVICES / PROJECT MANAGEMENT /

PROJECT MANAGEMENT

- Introduction

The aim of SOFTTEL's Project Management Service is to meet all contractual commitments and thereby meet and possibly exceed the customer's expectations. Jupsoft's Project Management Service covers all phases from project preparation and execution through transfer to the care phase, and closure of the project. The deliverable of SOFTTEL's Project Management Service is:

- Upfront investment and professionally managed project start-up.
- Highest caliber technical management.
- Accurate and transparent project control and reporting.
- Solid service supplier management.
- Systematic project and quality management.
- Project communication management with regular meetings and collaborative tools.
- Health and safety management matching Jupsoft's guidelines and local legislation.



SERVICES / PROJECT MANAGEMENT /

PROJECT MANAGEMENT

- Project Preparation & Start-up

The conditions for successful project are created prior to actual deployment. Therefore SOFTTEL invests extra resources in the project preparation and start-up phases.

The SOFTTEL's project preparation phase includes the following activities:

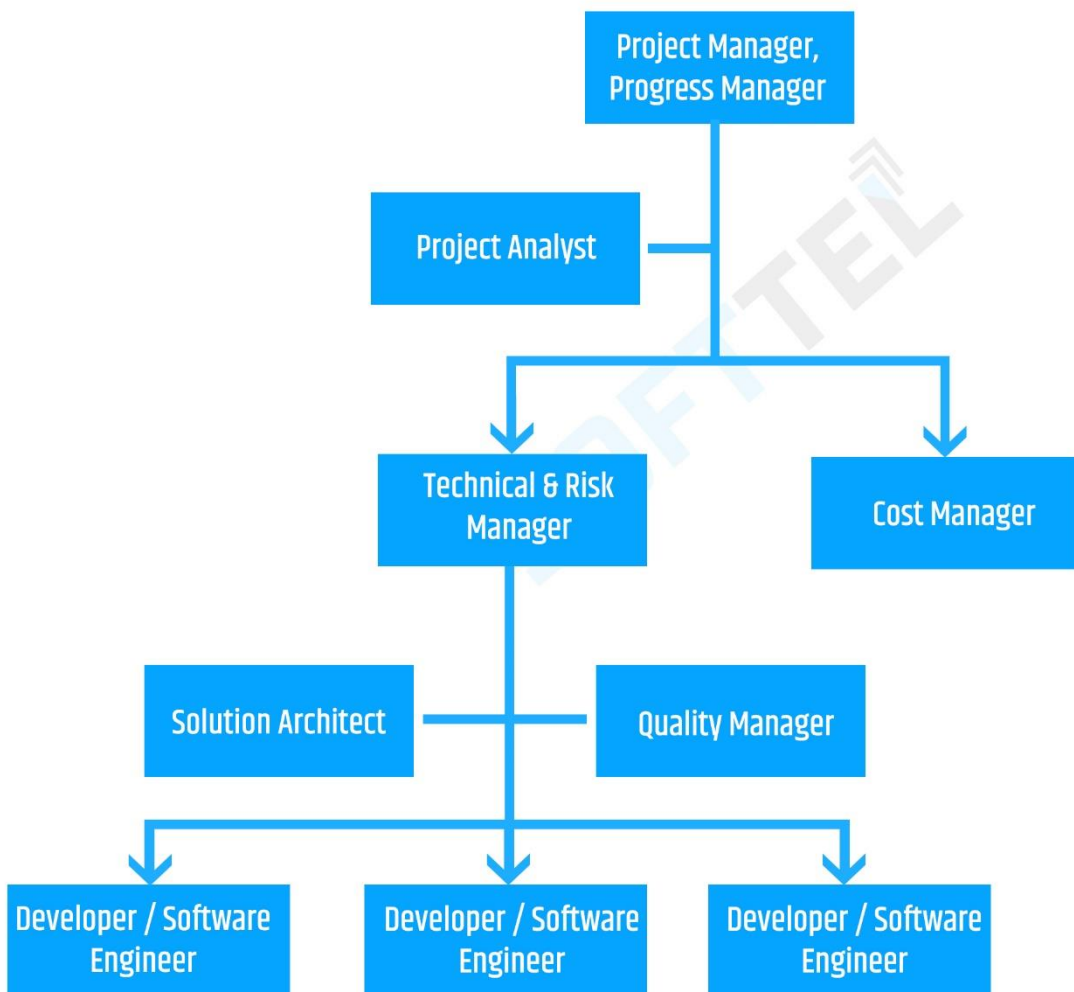
- Project manager nomination and a detailed project plan for the customer project, including
 - complementary plans (if any).
 - Planning and implementation guidelines.
 - Jupsoft's resource evaluation and planning.
 - Contract preparation with subcontractors.
 - Risk management.



SERVICES / PROJECT MANAGEMENT /

PROJECT MANAGEMENT

- Project Resource Management

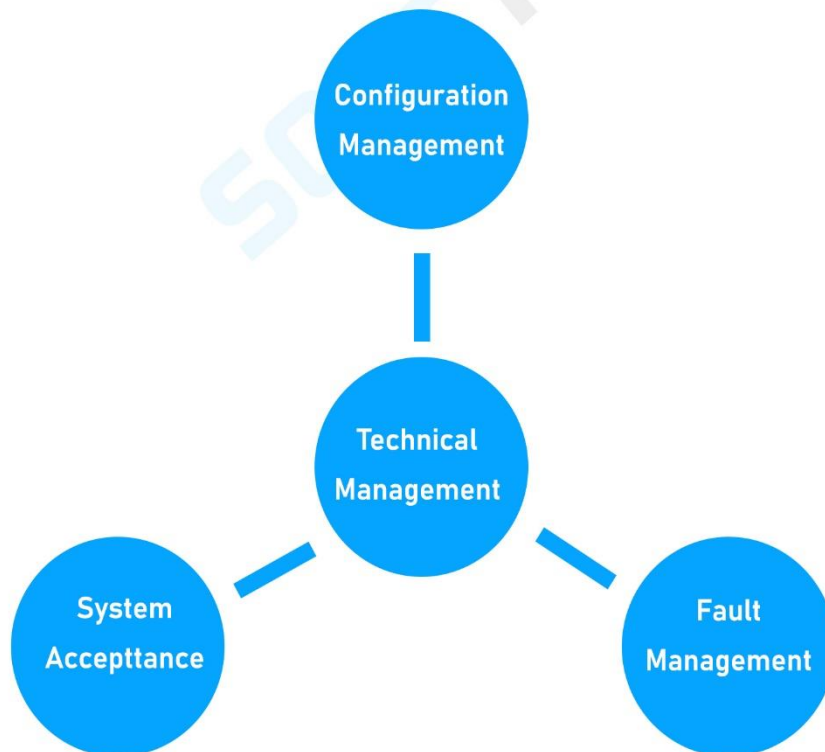


SERVICES / TECHNICAL MANAGEMENT /

TECHNICAL MANAGEMENT

- Introduction

SOFTTEL's approach to the successful integration and launch of complex software utilities is based on a stable pool of highly trained software engineers and a dedicated technical manager. This team is equipped with all the key core skills and the support to see to it that agreed objectives are met in a punctual, effective, and co-operative manner.



SERVICES / TECHNICAL MANAGEMENT /

TECHNICAL MANAGEMENT RESPONSIBILITY AREAS

- Implementation Management

- The technical manager is responsible for planning and managing the application implementation.
- The technical manager leads the implementation planning, plus the commissioning and integration work to obtain customer acceptance of the application elements.

- System Acceptance Testing

- Definition of all acceptance processes, procedures, criteria, and system acceptance test plans that are in line with the terms and conditions of the contract with the customer.
- Tracking and monitoring of acceptance progress, clarification of any open issues, and the definition of action plans needed to have a pro-active approach to avoid delays in acceptance.
- Monitoring of key performance metrics and fault resolution with the customer to make sure that business needs are met and that quality of service is maintained as agreed.

- Fault Management

- Support for application modules integration. If problems are encountered at integration, the technical management team takes the lead in troubleshooting and fault resolution activities until all faults are identified and the module is successfully integrated.
- Impact analysis to determine the extent of the fault. In some cases the outcome of a failure report may be a software correction.
- Fault management is supported by SOFTTEL's customer care organization.

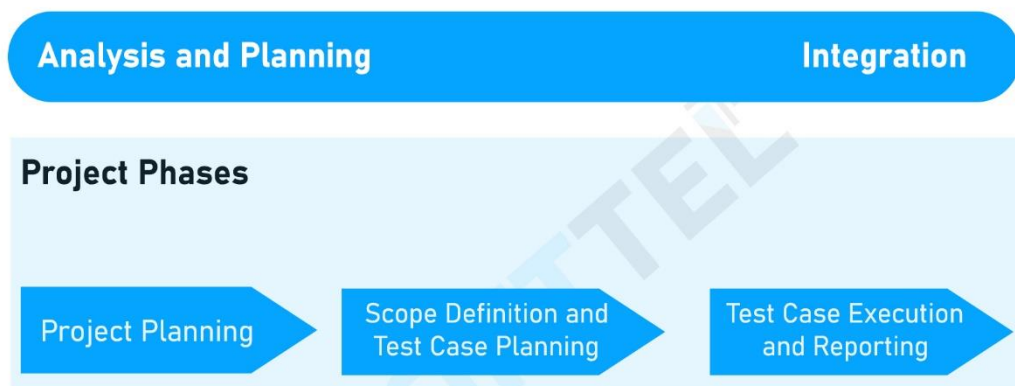


SERVICES / TECHNICAL MANAGEMENT /

TECHNICAL MANAGEMENT RESPONSIBILITY AREAS

- Configuration Management

Management of customer software release upgrades and updates, as well as maintaining a reference list with required software/hardware levels and parameters as agreed with customer.



- Project Planning

During a kick-off and consequent planning meetings with the customer following topics are agreed:

- Non-disclosure agreements (NDA)
- Technical scope
- Processes and documentation
- Share of responsibilities
- Schedule
- Reporting



SERVICES / TECHNICAL MANAGEMENT /

TECHNICAL MANAGEMENT RESPONSIBILITY AREAS

- Scope Definition and Test Case Planning:

In this phase the test case list together with required tools and test equipment, test configuration and other prerequisites will be defined. Prior to start of the testing activities all involved parties will review the processes, test cases, and schedule, and explicitly agree and commit to the test plan.

- Test Execution and reporting:

The test is coordinated effort of the customer and SOFTTEL, in order to complete the tests, identify problems, and propose solutions for them. Test execution of the test cases is done at the SOFTTEL's testing center. Results for every test case are agreed between the parties as successful, not successful, failed or blocked in accordance to rules and recommendations. Possible faults will be reported through the fault report procedure. If a solution is available, re-testing will take place to complete the testing session. If compatibility problems are found, they will be addressed to a technical workgroup composed of R&D experts, specification experts and testers. After the test plan is executed, a final verification test report with an action plan and recommendations will be prepared summarizing the test results and identified faults.



SERVICES / CONSULTANCY /

CONSULTANCY

Consulting is the integrated part of our services with expertise in custom programming, client-server database design and implementation, and web development. We specialize in designing and implementing cost-effective, creative information solutions to complex business problems. We have provided are services to finance institutions, health care sector, government sector and manufacturing environment.

We pay full attention to customers, doesn't matter theirs is Five page web site or fully fledged ERP to be designed. And we take proud in the fact that customers right from the inception have continuously added to our friends list. Most of our customers are brought to us through our satisfied users. Our vast pool of technically qualified and managerial manpower is well supported by excellent infrastructure and knowledge management facilities to deliver the client time bound, qualitative and cost effective solution meeting the global standards.



SERVICES / OUTSOURCING /

OUTSOURCING

When your business is running twenty-four seven to come up with innovative means to maximize its potential, outsourcing isn't just an option it is a necessity. Today, efficient business process outsourcing has become the lever to unload your organization of resource-consuming procedures and controllable costs. Everyone works towards allowing your organization a stronger focus on core business areas.

SOFTTEL not only provides industry-specific solutions but also deputes personnel to organizations with technical skills to manage back office transaction processing. Viewing it from clients' perspective this cuts off cost on acquiring and maintaining technical staff and enables them focus on their core competencies. The key element of services delivery is an integrated approach towards providing increasing value over the entire course of our client relationships.

- Data Processing and Data Conversion

The organization has experience in processing large volumes of data required by major corporate and government organizations. Jupsoft also offers commercial data processing services, which are time critical and mission critical for its customers. It plans, tracks and executes whatever it takes to meet the delivery schedules and quality requirements. Choose Jupsoft for outsourcing data processing services as it: it improves your productivity, improves your effectiveness of process, improves your service levels, offers high level of customer service and lowers your costs. Jupsoft also provides total solutions Data conversion space.



SERVICES / OUTSOURCING /

OUTSOURCING

- Software Outsourcing

Software out

- E-Accounting

An organization can substantially slash its 'minimum' by more than 25% by shifting its administration to business process outsourcing, and here we have a major role to play. We provide offshore back office operations of which e-accounting is a part. This in turn can reduce the cost of running a business considerably.

- E-Business

The top priority of every company today is managing costs. Lower costs mean higher cash flows. Cash is king. It gives the companies the flexibility to be the price leader, to spend on new products and to offer better customer service.

- Data Entry

Our advanced staff of data professionals can prepare your data for you on the media of choice. We can email daily, weekly, or at the end of the job or simply send a CD-Rom or DAT tape with your final data.



SERVICES / EDUCATION / TRAINING /

EDUCATION / TRAINING

- Software Outsourcing

SOFTTEL, provides quality education in various fields of IT. In an age of cutthroat competition, college education is not enough. To have an edge over your counterparts, you need to have something EXTRA. We have highly qualified, capable & experienced team of faculty comprising of professionals & technical experts. Individual attention is provided to students and equal emphasis is given to both theory and practical. SOFTTEL also provide training to M.C.A's, B.Tech's and M.Tech's.

The mission of SOFTTEL is to provide quality education in the various fields of information technology for people of all walks of life

- Corporate Training Consultation




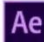


In our corporate training programs we emphasis on a course schedule that achieves following objective for the corporate:

- Training should align with the business plan and address the core competencies of your business
- It is necessary that training outcomes strengthen the job environment and organizational practices but vice-versa is obligatory as well.
- Knowledge management and self-directed learning should be integral part of the training/learning processes
- We ensure that Training process is effective, efficient and is properly staffed, organized, and managed.
- We have feedback systems to monitor business plans, performance problems and training results.

SERVICES / THE TECHNOLOGIES /

THE TECHNOLOGIES

Design

					
Sketch	Photoshop	Illustrator	After Effects	Principle	Adobe XD

Mobile Usability

		
RWD	AMP	PWA

Web & Hybrid

					
HTML5	CSS3	Angularjs	Backbonejs	Reactjs	Vuejs

Mobile Framework

					
Swift	Objective C	React Native	Android NDK	JAVA	Ionic

Backend

					
Nodejs	Python	Django	Grails	Go	PHP



+919834663366



www.softtel.in




info@softtel.in

SERVICES / THE TECHNOLOGIES /
THE TECHNOLOGIES

CMS

		
Wordpress	Drupal	Joomla

E-commerce

		
Magento	Shopify	Prestashop

PHP Framework

				
Core PHP	Laravel	CI	Yii	Cake PHP

Database

				
Postgre SQL	Mongo DB	Redis	Cassandra	Elastic Search

Backend

				
GoogleAE	AWS	Heroku	Digital Ocean	Firebase



SERVICES / THE TECHNOLOGIES /

THE TECHNOLOGIES

DevOps

 GitHub	 Jenkins	 New Relic	 CloudWatch	 Docker
---	--	--	---	--

Payments

 Paypal	 Authorize.net	 Apple Pay	 Stripe	 Braintree
---	--	--	---	---

Chat

 Pubnub	 Pusher	 Websocket	 Firebase	 Azure SignalR
---	---	--	---	--

Enterprise Solution

 Salesforce	 Bitrix	 Odoo	 SugarCRM
---	---	---	---

Compliances

 GDPR



+919834663366



www.softtel.in



info@softtel.in